

Joint Tactical Exercise Planning Staff



JTEPS JW112

Northwood Headquarters
Sandy Lane
NORTHWOOD
Middlesex
HA6 3HP

BT: (01923) 958788
Fax: (01923) 958779
E-mail: jteps-sm-so2@mod.uk

7 September 2011

JOINT WARRIOR 112 - SUBMARINE, MINEWARFARE AND LIVE FIRING ACTIVITY

1. Joint Warrior (JW) 112, will take place from 3 until 13 October 2011 and will comprise of a programme of exercises conducted by land forces, warships, submarines and aircraft across the UK with the maritime element focussed in the offshore and coastal waters to the north east, north and north west of Scotland. This booklet provides outline information on their scheduled operations as well as details of intended gunnery and aircraft bombing activity at Cape Wrath and in some open ocean areas.
2. The information is correct at the time of going to print but the routine **SUBFACTS and GUNFACTS** broadcasts, made during the exercise, will provide updated information.
3. The information provided in this booklet will also be published in Fleet Ops Notice to Fishermen, Defence Training Estate Scotland Notice to Fishermen and Cape Wrath Range Notices. This document is also on the internet at <http://www.qhm.mod.uk/clyde>
4. This booklet contains the following sections:
 - a. Submarine Activity.
 - b. Warship Activity.
 - c. Minewarfare Activity.
 - d. Live Firing and Gunnery Activity.
 - e. Denial GPS Services.
 - f. Unexploded Ordnance Advice.
5. The warships taking part have been instructed to offer fishing vessels every assistance in their dealings with exercise activity, especially when in the vicinity of submarines or participants conducting live firing. You are invited to contact them as required to ensure that our two activities do not come into conflict.

6. Throughout JW 112 the following points of contact are available to attend to any immediate problems or questions:

Duty Submarine Controller 01923 956366

Joint Warrior Duty Controller 01436 674321 ext. 4372

HM Coastguard at Clyde, Stornoway and Aberdeen can also contact my staff directly and will relay information if necessary.

7. If you have any queries, problems, or suggestions as to how JTEPS can improve this booklet, please do not hesitate to contact my Staff Officer Submarines at the above address.

P J Titterton OBE
Captain Royal Navy
Director JTEPS

Submarine Activity

1. The Submarine Activity Grid on the following page shows the areas and time periods where submarine activity associated with Joint Warrior is forecast. Please note that other submarines that are not part of the exercise may transit the areas north west of Scotland; their activity is not covered in this brief. The daily SUBFACTS broadcast by the Coastguard will provide notification of the actual areas where **all** submarine activity is taking place. During Joint Warrior, in order to keep the SUBFACTS broadcast short, a number Scottish Exercise Areas are grouped together. The groupings are shown in the chartlet and table in this section.
2. Communications can be established with submarines during JW, when they are surfaced or at periscope depth, on VHF Ch 16 (working Ch 73). In the event that they are operating with warships, one of the warships will have been detailed to act as the Fishing Vessel Safety Ship (FVSS) in accordance with the Code of Practice. The FVSS has two overarching duties:
 - a. To make fishing vessels aware of submarine activity in their vicinity and to provide information and advice to minimise the risk of interaction.
 - b. To provide assistance to the participating submarine in compiling a comprehensive surface picture in order to minimise the risk of interaction with non-exercise vessels.
3. It is usually easier to establish communications with the FVSS than with a submarine. However, any warship in the vicinity may be contacted and asked for a report on any exercises involving submarines which are being conducted in the local area. Alternatively, the ship may be used to relay messages or instructions to the submarine if required.

Submarine Activity

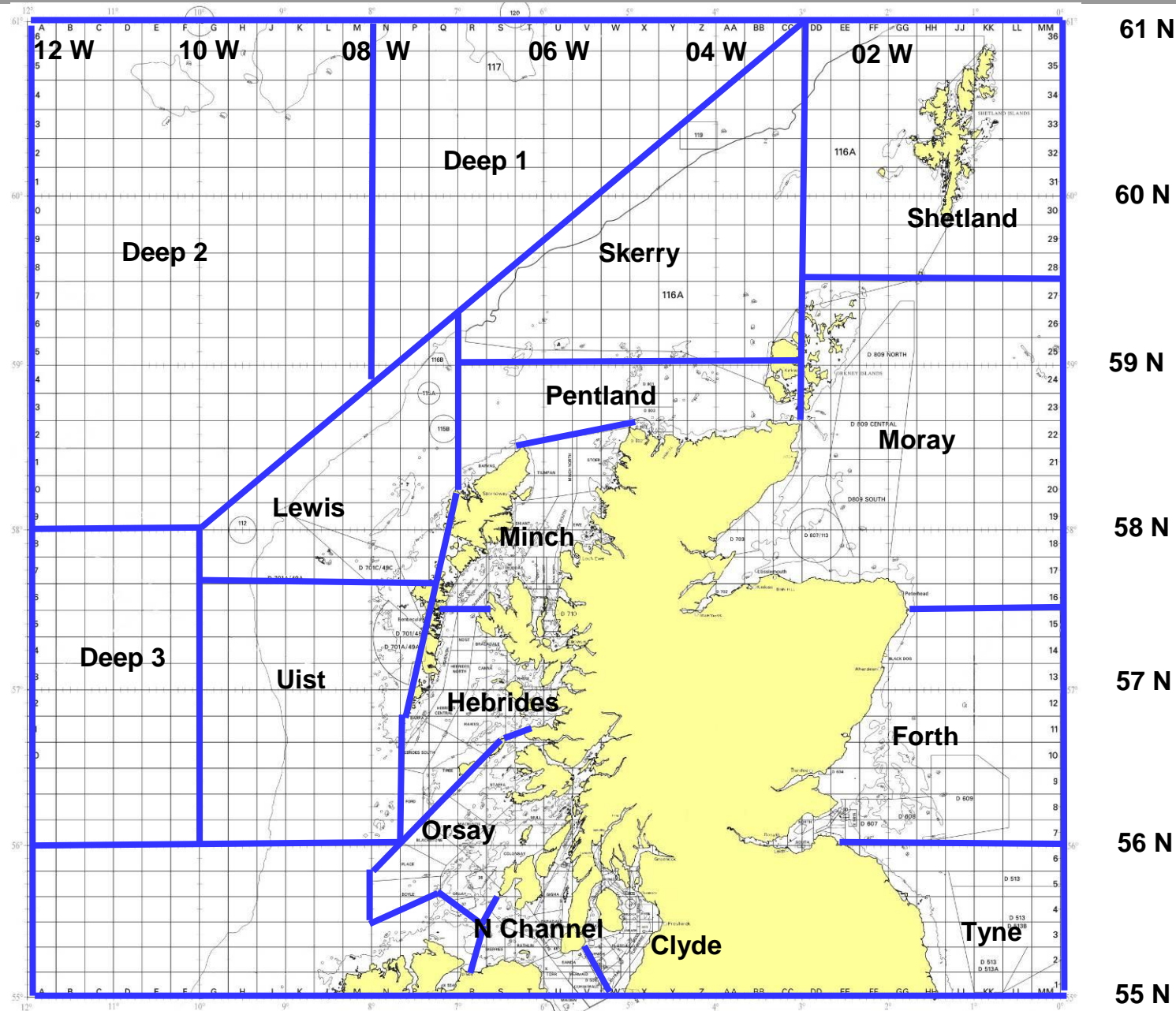
Exercise Joint Warrior 112

SUBFACTS AREAS ACTIVATION GRID

	2 OCT			3 OCT			4 OCT			5 OCT			6 OCT			7 OCT			8 OCT			9 OCT			10 OCT			11 OCT			12 OCT			13 OCT			
	SUN			MON			TUE			WED			THR			FRI			SAT			SUN			MON			TUE			WED			THR			
Active Time Period BST	0001 - 0800	0800 - 1600	1600 - 2359	0001 - 0800	0800 - 1600	1600 - 2359	0001 - 0800	0800 - 1600	1600 - 2359	0001 - 0800	0800 - 1600	1600 - 2359	0001 - 0800	0800 - 1600	1600 - 2359	0001 - 0800	0800 - 1600	1600 - 2359	0001 - 0800	0800 - 1600	1600 - 2359	0001 - 0800	0800 - 1600	1600 - 2359	0001 - 0800	0800 - 1600	1600 - 2359	0001 - 0800	0800 - 1600	1600 - 2359	0001 - 0800	0800 - 1600	1600 - 2359				
ORSAY			A	A	A	A	A	A																													
N.CHANNEL			A	A	A	A	A																														
HEBRIDES				A	A	A	A	A	A	A	A	A	A	A	A	A	A	A	A	A	A	A	A	A	A	A	A	A	A	A	A	A	A	A	A	A	
MINCH							A	A	A	A	A	A	A	A	A	A	A	A	A	A	A	A	A	A	A	A	A	A	A	A	A	A	A	A	A	A	
UIST							A	A	A	A	A	A																									
LEWIS													A	A	A	A	A	A	A	A	A	A	A	A	A	A	A	A	A	A	A	A	A	A	A	A	
PENTLAND													A	A	A	A	A	A	A	A	A	A	A	A	A	A	A	A	A	A	A	A	A	A	A	A	
SKERRY														A	A	A	A	A	A	A	A	A	A	A	A	A	A	A	A	A	A	A	A	A	A	A	
DEEP 1														A	A	A	A	A	A	A	A	A	A	A	A	A	A	A	A	A	A	A	A	A	A	A	
DEEP 2														A	A	A	A	A	A	A	A	A	A	A	A	A	A	A	A	A	A	A	A	A	A	A	
DEEP 3																																					
SHETLAND																																					
MORAY																																					
FORTH																																					
TYNE																																					

The planned activity in the JW SUBFACTS AREAS is indicated by the letter **A** in the grid above. There may be changes to this planned activity. Daily SUBFACTS Broadcasts will contain the most up to date information regarding the activation of the areas.

Submarine Activity



JW SUBFACTS
Area Groupings

61 N

60 N

59 N

58 N

57 N

56 N

55 N

Submarine Activity

SCOTTISH EXERCISE AREAS – JW SUBFACTS GROUPING

CLYDE

BALLANTRAE
AILSA
STAFNISH
PLADDA
TURNBERRY
DAVAAR
LAMLASH
GOIL
COVE

AYR
BRODICK
IRVINE
LAGGAN
GARROCH
LOCHRANZA
SKIPNESS
ROSNEATH

TARBERT
MINARD
FYNE
WEST KYLE
EAST KYLE
CUMBRAE
STRIVEN
GARELOCH

ORSAY

STAFFA
MULL
BLACKSTONE
MACKENZIE

EIGG
JURA SOUND
PLACE
ORSAY

COLONSAY
LINNHE
BOYLE

NORTH CHANNEL

ISLAY
EARADALE
RATHLIN
MAGEE
PEEL
TORR

OTTER
KINTYRE
MAIDEN
BEAUFORT
MERMAID

GIGHA
SKERRIES
CORSEWALL
ARDGLASS
SANDA

HEBRIDES

USHENISH
CANNA
HEBRIDES NORTH
TIREE
BARRA

NEIST
RHUM
HEBRIDES CENTRAL
HAWES
FORD

BRACADALE
SLEAT
HEBRIDES SOUTH
EIGG

MINCH

RONA NORTH
RAASAY
SHIANT
MINCH SOUTH
LOCHMADDY

RONA SOUTH
TIUMPAN
EWE
PORTREE
DUNVEGAN

RONA WEST
STOER
MINCH NORTH
TRODDAY
CROWLIN

Warship Activity

VHF Challenges

1. In light of ever changing threats to our Armed Forces, military ships maintain a detailed plot of maritime activity in their vicinity, which includes establishing the identity of small fishing vessels. This can be achieved visually from helicopters or by challenges on IMM VHF radio by ships. Mariners are advised that warships from various Allied Nations will be conducting such reconnaissance and challenges. Areas likely to be affected are the Clyde, North Channel, South of the Sea of Hebrides, the Sea of Hebrides, the Little Minch, North Minch, the area near Cape Wrath, Loch Eriboll and the Outer Hebrides. Mariner's co-operation during this time would be much appreciated. A small number of contracted civilian vessels including high speed craft will be operating in the vicinity of the Minches in support of this training task. Every effort will be made to avoid interference to fishing vessels.

Smoke Screens

2. Exercise smoke screens will be operated in Clyde exercise areas Laggan, Garroch, Brodick, Irvine, Lamlash and Ayr on Tuesday 4 October between 0700 and 1900. These smoke screens are non-toxic and will not be persistent in nature. The smoke screens will extend to a height of approximately 1000ft with a length of approximately 1000yds and will dissipate approximately 5 minutes after production.

Minewarfare Activity

1. Mine Counter Measures (MCM) vessels will conduct minehunting exercises using sonar and towed sweeps to look for potential mines both on the seabed and moored to the seabed that are subsequently investigated by remote controlled submersible vehicles and divers.
2. Towed sweeps for minesweeping will be used during JW 112.
3. All participating MCM vessels will be thoroughly briefed on local fishing operations in advance of the exercise and are instructed to make early liaison calls to fishing vessels on VHF. Skippers of fishing vessels operating in the vicinity of these ships are encouraged to talk to them and discuss intentions.
4. If any difficulty is experienced a call should be made to the Duty Submarine Controller at CTF 311 OPS ROOM on the "Fishermen's Hotline" number, 01923 956366. This line is permanently manned.
5. The following MCM vessels will participate in Ex JW 112:

<u>Name</u>	<u>Nationality</u>	<u>Pennant No.</u>
HMS PENZANCE	British	M106
HMS CATTISTOCK	British	M31
HMS LEDBURY	British	M30
HMS BLYTH	British	M111
HMS HURWORTH	British	M39
ENS TASUJA	Estonian	A432
FGS UEBERRHERN	German	M1095
ORP FLAMING	Polish	621
HNOMS MAALOEY	Norwegian	M342

6. Inert mines have been laid for the exercise, in the following areas:

- a. **LOCH EWE** (see chartlet 1)

All areas within Loch Ewe between latitudes 57 52.28N and 57 49.20N

- b. **LOCH EWE APPROACH** (see chartlet 1)

1000 yards either side of a line: A. 58 00.00N 005 46.00W
B. 57 55.00N 005 43.80W

- c. **CARN SKERRIES/HORSE ISLAND** (see chartlet 1)

A. 57 57.94N 005 20.08W
B. 57 57.55N 005 20.57W
C. 57 58.44N 005 23.08W
D. 57 58.84N 005 22.58 W

Minewarfare Activity

- d. **EILEAN DUBH** (see chartlet 1)
- A. 57 59.23N 005 25.60W
 - B. 57 58.85N 005 25.50W
 - C. 57 58.75N 005 26.84W
 - D. 57 59.60N 005 26.90W
- e. **PRIEST ISLAND (SOUTH)** (see chartlet 1)
- A. 57 56.91N 005 31.48W
 - B. 57 56.50N 005 31.82W
 - C. 57 56.83N 005 33.32W
 - D. 57 57.27N 005 33.00W
- f. **GRUINARD BAY APPROACH** (see chartlet 1)
- A. 57 56.24N 005 28.57W
 - B. 57 55.80N 005 28.91W
 - C. 57 56.25N 005 30.70W
 - D. 57 56.68N 005 30.46W
- g. **GRUINARD BAY** (see chartlet 1)
- A. 57 54.00N 005 29.61W
 - B. 57 52.80N 005 29.61W
 - C. 57 52.80N 005 30.80W
 - D. 57 53.02N 005 30.80W
 - E. 67 53.02N 005 30.00W
 - F. 57 54.00N 005 30.00W
- h. **BROAD BAY** (see chartlet 3)
- A. 58 16.60N 006 14.60W
 - B. 58 16.60N 006 12.20W
 - C. 58 15.40N 006 12.20W
 - D. 58 15.40N 006 12.20W
- i. **LOCH ERIBOLL APPROACH** (see chartlet 4)
- A. 58 42.97N 004 42.00W
 - B. 58 34.00N 004 36.72W
 - C. 58 31.96N 004 38.16W
 - D. 58 29.70N 004 41.30W
- j. **LOCH ERIBOLL ANCHORAGE (NORTH)** (see chartlet 4)
- A. 58 33.30N 004 38.00W
 - B. 58 33.30N 004 36.40W
 - C. 58 32.00N 004 36.40W
 - D. 58 32.00N 004 38.00W

Minewarfare Activity

7. The planned minelay and recovery programme:
- Minelay.** Has been completed.
 - Mine recovery.** Mines will be recovered throughout JW 112.
8. Minehunters will conduct live firings of mine disposal charges in the following area:
- MINE DISPOSAL CHARGE FIRING AREA** (see chartlet 1)
 - 57 57.58N 005 33.93W
 - 57 57.85N 005 33.93W
 - 57 58.25N 005 31.97W
 - 57 57.02N 005 31.97W
 - DIVER PLACED CHARGES FIRING AREA** in Loch EWE will take place within a circle, with a radius of 200m, centred on 57 48.200N – 005 38.900W.
9. Minesweeping will take place during JW 112 and will be restricted to the following corridors:
- EAST SHIANT BANK** (see chartlet 2)

1000 yds either side of a line:

A.	57 56.38N	006 08.40W
B.	58 02.80N	005 59.60W
 - LOCH EWE APPROACH** (see chartlet 1/2)

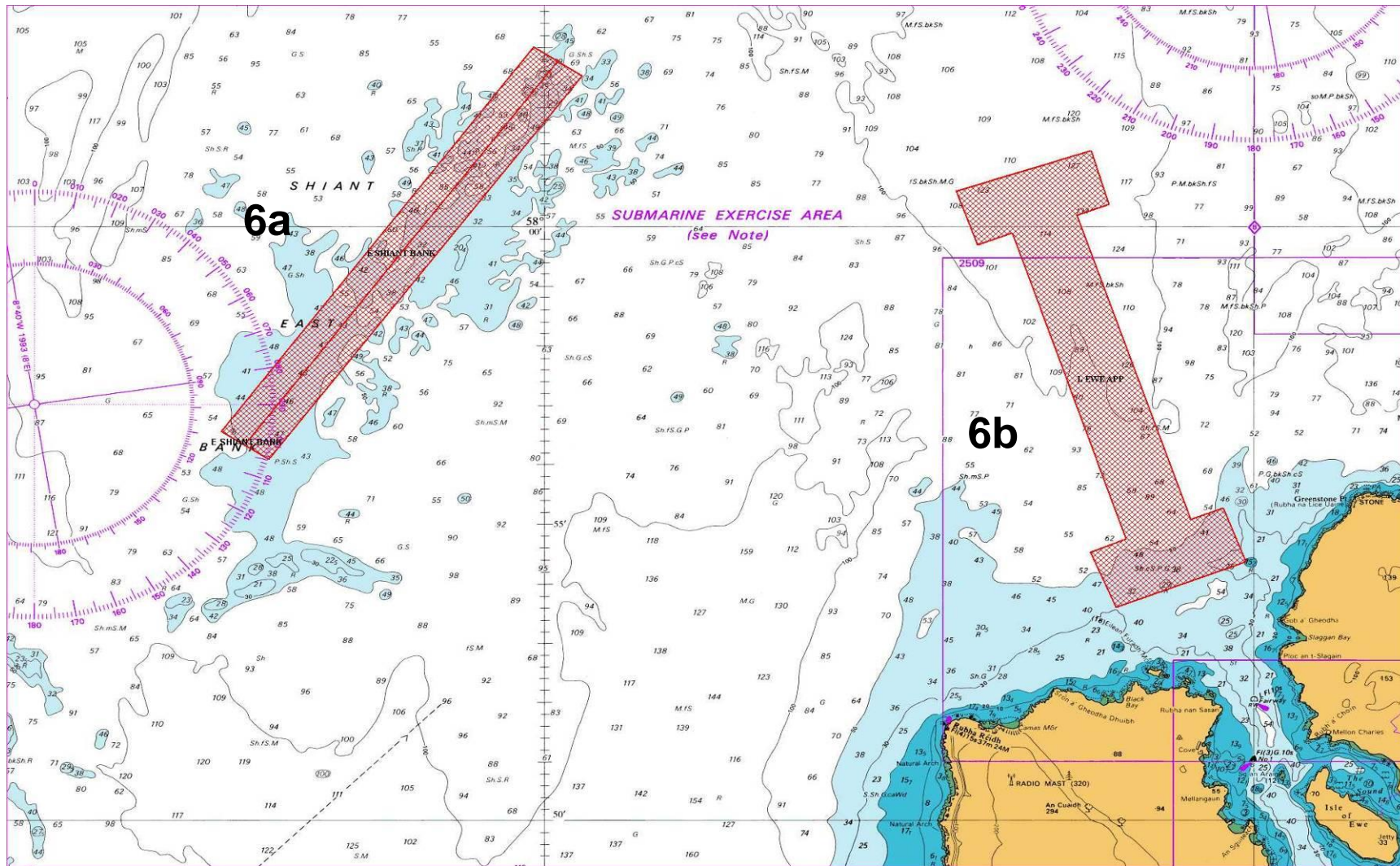
1000 yds either side of a line:

A.	58 00.00N	005 46.00W
B.	57 55.00N	005 43.80W

To enable ships to turn at the end of the corridor, turning areas have been added. The sweeping corridor will therefore be within the following co-ordinates:

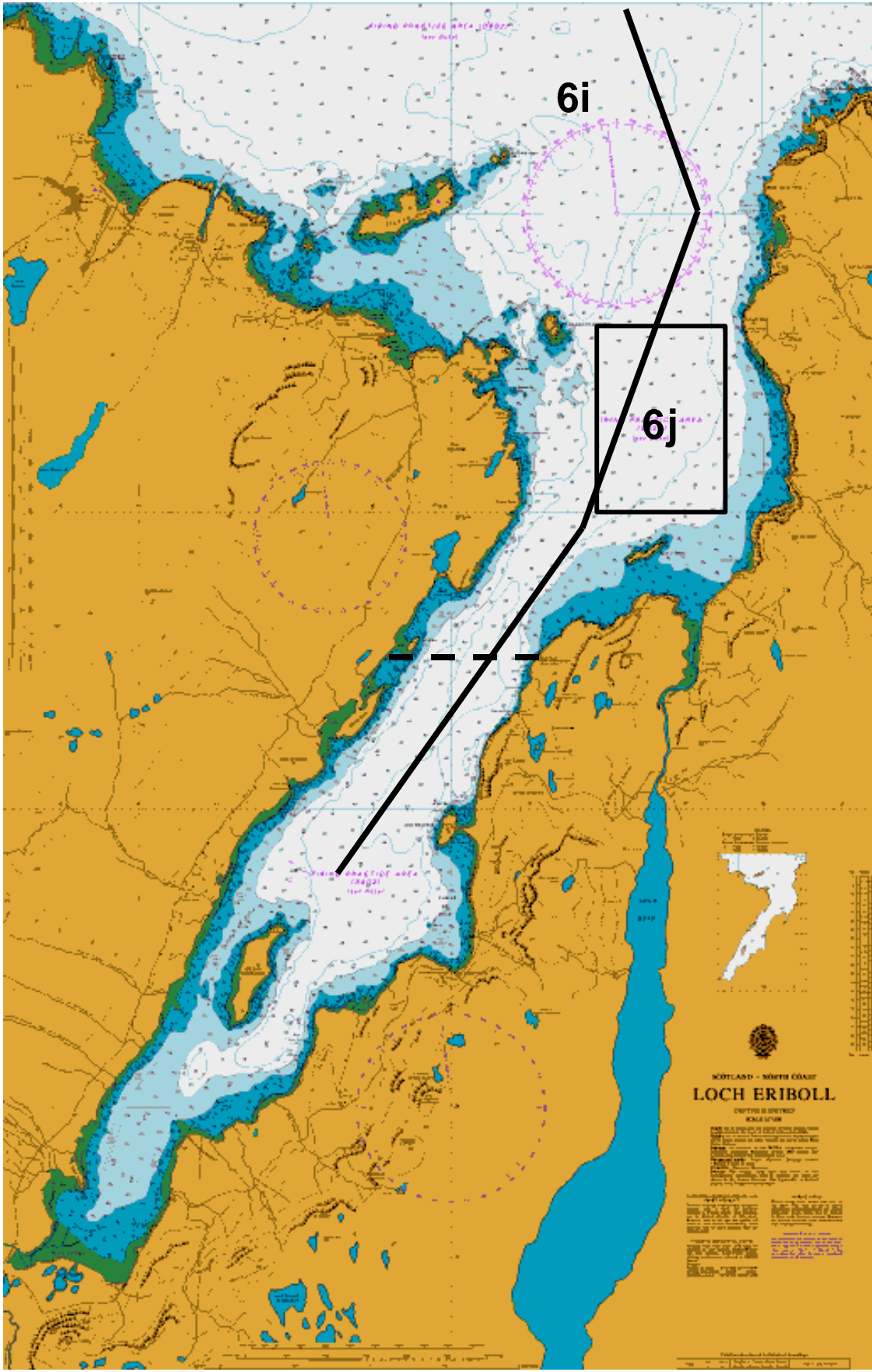
A.	57 53.60N	005 44.00W	B.	57 54.30N	005 40.40W
C.	57 55.10N	005 41.00W	D.	57 55.10N	005 41.80W
E.	58 00.20N	005 45.00W	F.	58 00.38N	005 44.10W
G.	58 01.28N	005 44.60W	H.	58 00.60N	005 48.40W
I.	57 59.70N	005 47.80W	J.	57 59.90N	005 46.82W
K.	57 54.75N	005 43.62W	L.	57 54.55N	005 44.60W
10. Liaison between the MoD and appropriate fishermen's associations/organisations, in some cases with individual owners/skippers, HM Coastguard and Marine Scotland have been made to use the above areas. Should anyone consider that their organisation/association should be included in this process in future please contact Lieutenant Commander Matt Offord (FOSNNI SMCDO) on 01436 674321 extn 6510.

Minewarfare Activity



Chartlet 2

Minewarfare Activity



Chartlet 4

Live Firing and Gunnery

1. During Joint Warrior, Cape Wrath Range, including Garvie Island (An Garbh-eilean) will be active with various combinations of air bombardment, naval gunfire support and helicopter operations. In addition a Joint Warrior Firing and Danger Area will be activated for offshore gunnery. The Gunfacts and JW Offshore Firing Areas Activation Grid on the following page shows the areas and time periods where gunnery associated with Joint Warrior is forecast to take place. The daily GUNFACTS Broadcast by the Coastguard and Cape Wrath Range will provide notification of the actual areas where all the gunnery activity is taking place.
2. Joint Warrior Firing and Danger Area coordinates are in the accompanying chartlet.
3. It is mandatory that vessels in the vicinity of the Cape Wrath Range keep a listening watch on VHF Channel 16. Further information regarding firing at can be obtained by telephoning:

**Cape Wrath Information Line on
FREEPHONE 0800 833300.**

or **01862 892185**

The number will provide specific information about active/non-active periods and when the Range road (U70) will be open/closed for public access.

Live Firing and Gunnery

Exercise Joint Warrior 112

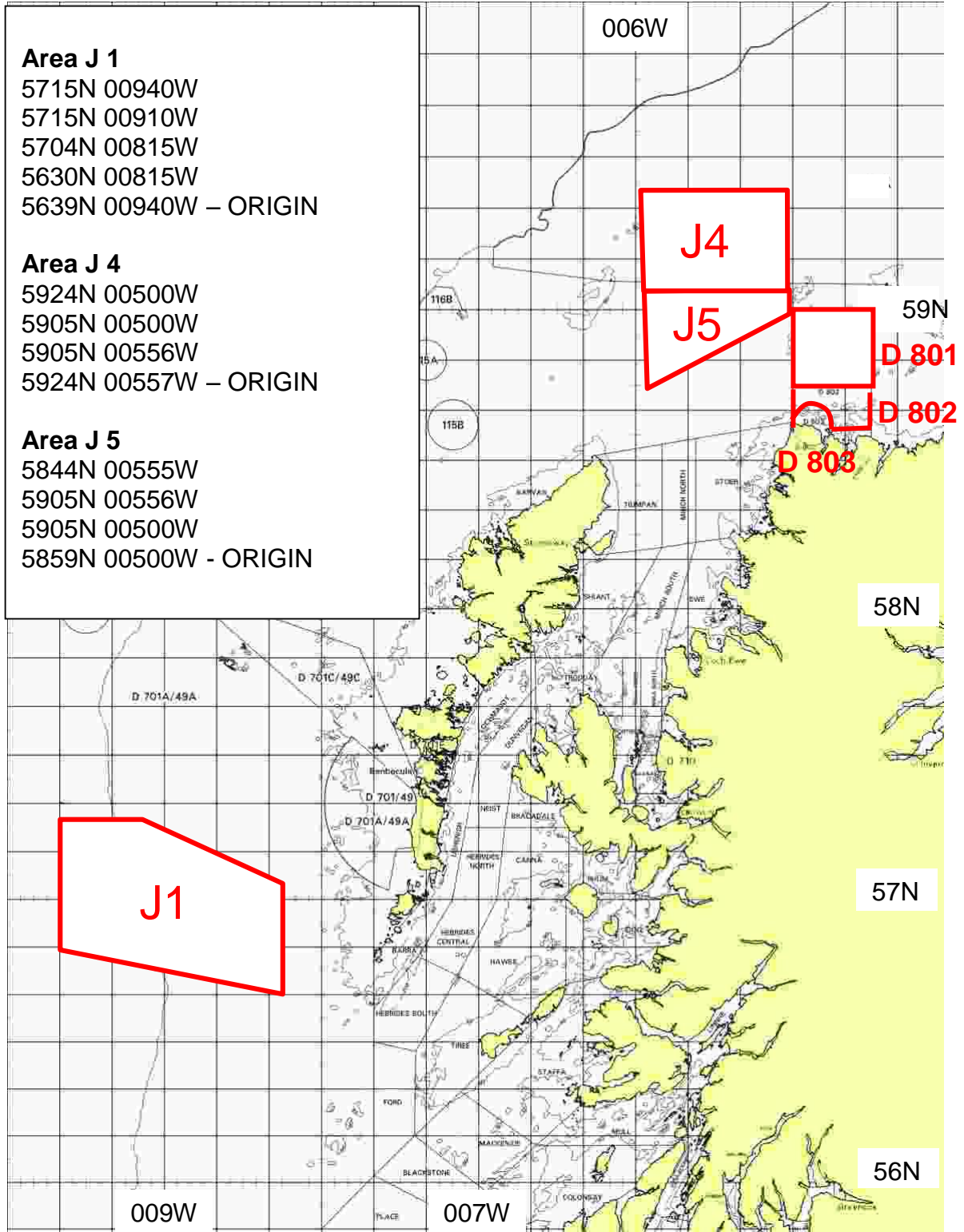
GUNFACTS AND JW OFFSHORE FIRING AREAS ACTIVATION GRID

	3 OCT	4 OCT	5 OCT	6 OCT	7 OCT	8 OCT	9 OCT	10 OCT	11 OCT	12 OCT	13 OCT
	MON	TUE	WED	THR	FRI	SAT	SUN	MON	TUE	WED	THR
Cape Wrath Range (Ashore)	0100-2359	0100-2359	0100-2359	0100-2359	0100-2359	0100-2359	0100-2359	0100-2359	0100-2359	0100-2359	0100-2359
Cape Wrath D801		1400-1800									
Cape Wrath D802	0930-2330	0730-1830	1130-1900	1030-2000				0730-2359	0730-2359		
Garvie Island D803	0930-2330	0730-1830	1130-1900	1030-2000				0730-2359	0730-2359		
JW Danger Area J1		0930-1600									
JW Danger Area J4			1300-1430								
JW Danger Area J5			1300-1430								
Clyde Areas D 509	0900-2000										

The planned times of firings at Cape Wrath Range and JW Firing areas is indicated in the grid above. There may be changes to this planned activity. Daily GUNFACTS Broadcasts and Cape Wrath Range Broadcasts will contain the most up to date information regarding the activation of the areas. Times are Local.

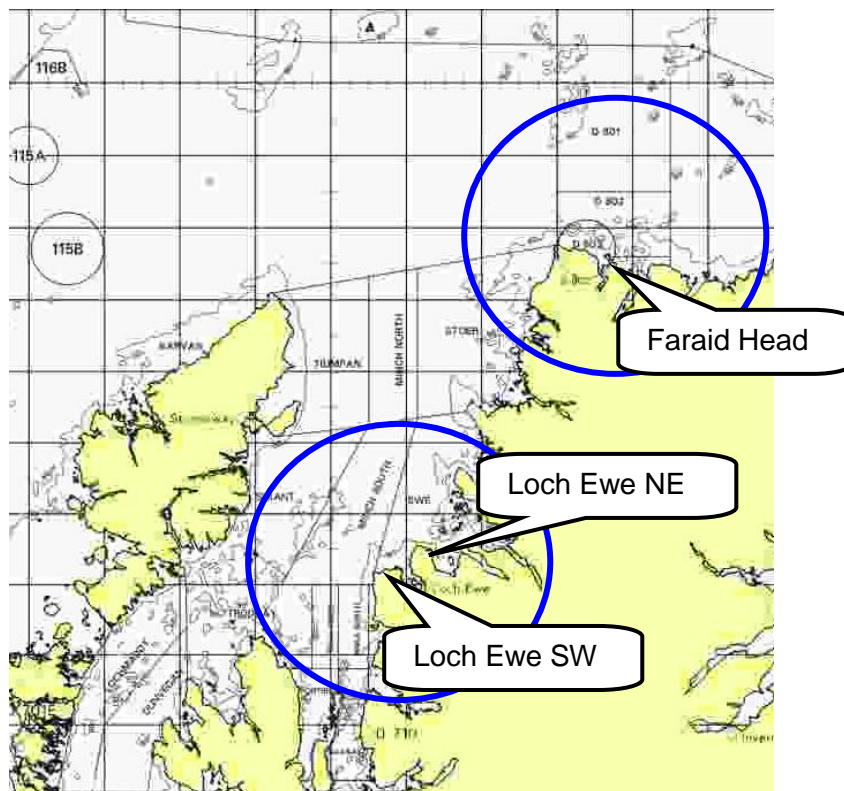
Live Firing and Gunnery

JOINT WARRIOR FIRING AND DANGER AREAS



Denial of GPS Service

1. Denial of GPS services through the jamming of the GPS signal is a real and present danger to both military and civilian maritime and air users. The ability to conduct jamming is spread throughout the modern world. Naval Forces are required to train under such conditions in order to demonstrate the effects it has systems and to train personnel in other modes of operating.
2. Jamming of GPS signals will affect equipment using GPS within 20 nautical mile line of sight of the jamming sites. These are located at:
 - a. Faraid Head - 58 36.2N 004 46.4W
 - b. Loch Ewe NE - 57 51.9N 005 41.1W
 - c. Loch Ewe SW - 57 47.2N 005 47.5W



3. The planned times GPS Denial are shown in the table below. These timings are also promulgated in; Notice to Airmen, Notice to Mariners, WZ Navigation Warnings. The Coastguard will make a Sécurité broadcasts before and after each jamming event in the local area. During the exercise users may also contact the Joint Warrior Controller on: 01436 674321 ext. 4372.

Denial of GPS Service

Exercise Joint Warrior 112 GPS DENIAL TIME TABLE

	3 OCT	4 OCT	5 OCT	6 OCT	7 OCT	8 OCT	9 OCT	10 OCT	11 OCT	12 OCT	13 OCT
	MON	TUE	WED	THR	FRI	SAT	SUN	MON	TUE	WED	THR
Faraid Head		1200-1300 1830-1930	1700-1800	1300-1400 1800-1900		0900-1000 1100-1200 1300-1430	1200-1300	1200-1300 1700-1800	1200-1300 1700-1800		
Loch Ewe SW Site			0930-1130	1030-1230 1700-1900	0600-0800 1500-1600	0700-0800 1000-1100 1300-1400 1600-1700	1200-1400	1430-1730 2100-2300	0700-0800 1000-1100 1600-1700	1000-1100 1500-1600 2100-2200	0630-0730 0900-1000
Loch Ewe NE Site			0930-1130 1500-1700	1030-1230 1700-1900	0600-0800 1500-1600	0700-0800 1000-1100 1300-1400 1600-1700	1200-1400	1430-1730 2100-2300	0700-0800 1000-1100 1600-1700	1000-1100 1500-1600 2100-2200	0630-0730 0900-1000

Times are Local.

Unexploded Ordnance Advice

1. The following general advice is offered to anyone discovering anything believed to be unexploded ordnance:

DIVERS	DO NOT TOUCH
FISHERMEN	Contact the coastguard. If this is not possible, lay the item in about 60ft of water, away from shipping routes and mark the position with a float.
EVERYONE	DO NOT TOUCH – dial 999 for coastguard or Police.

Contact Telephone Numbers

UNEXPLODED ORDINANCE (FLEET DUTY CONTROLLER)	01923 956366
FISHERMAN'S HOTLINE (FLEET DUTY CONTROLLER)	01923 956366
JOINT WARRIOR CONTROLLER	01436 674321 Extn 4372
CAPE WRATH INFORMATION LINE	FREEPHONE 0800 833300

If future versions of this brief are not required please contact:

Joint Tactical Exercise Planning Staff, JHQ Room 301, Northwood Headquarters,
Sandy Lane, NORTHWOOD, Middlesex HA6 3HP

Telephone: 01923 958788.

E-Mail: JTEPS-SM-SO2@mod.uk